

Thunderbird2GroupWise

Data Migration Tool



Introduction

Novell© GroupWise© is a very stable messaging and collaborative software platform from Novell© that supports email, calendaring, personal information management, instant messaging, and document management.

The platform consists of the client software, which is available for Windows, Mac OS X, and Linux, and the server software, which is supported on Windows Server, Netware, and Linux.

The special GroupWise@Home version offers rich functionality which many millions have learned to love at work in their organization, so you can now enjoy the same rich feature set at home to access your private mail via POP3 or IMAP4.

However, if you want to switch to the GroupWise©/GroupWise@Home mail client you probably don't want to start from scratch ... however, there is help in sight (at least for existing Thunderbird users) ...

Thunderbird2GroupWise is a user friendly (and charge FREE) tool that transfers the existing mails from a Thunderbird mail client into GroupWise. Thunderbird2GroupWise creates the complete folder structure as it was in Thunderbird and transfers all mail items into the corresponding folders.

Requirements

Thunderbird2GroupWise can be installed on any standard workstation.

Hardware / Operating systems

- 32-bit/x86 processor or 64-bit/x86 processor running in 32-bit mode
- Any of the following desktop operating systems for the GroupWise Windows client:
 - Microsoft© Windows© XP with the latest service pack on a 300 MHz or higher workstation with at least 128 MB of RAM
 - Microsoft© Windows© Vista with the latest service pack on a 1 GHz or higher workstation with at least 1 GB of RAM
- 200 MB of free disk space on each user's workstation to install the Windows client.

Thunderbird2GroupWise

Data Migration Tool



Client-Software

Novell© GroupWise© Client, version 8.01.88093 or greater

For downloading the latest client versions please visit the following sites:

Home version: <http://www.mygwmail.net/>

Enterprise version: <http://download.novell.com/>

It is recommended that the Thunderbird client is still installed otherwise the Mbox-Files have to be selected manually.

Thunderbird2GroupWise is based on the .NET Framework 2, which will be installed (if not present) during the installation process.

Thunderbird2GroupWise Data Migration Tool



Installation

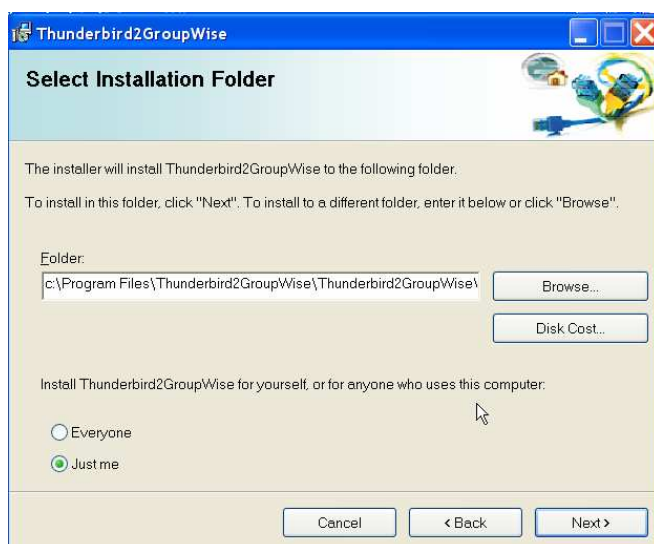
The most recent Thunderbird2GroupWise version (Thunderbird2GroupWiseSetup.zip) can be found here:

<http://www.mygwmail.net/>

After extracting the zip-File simply run the setup.exe. The installation wizard guides you through the installation process:



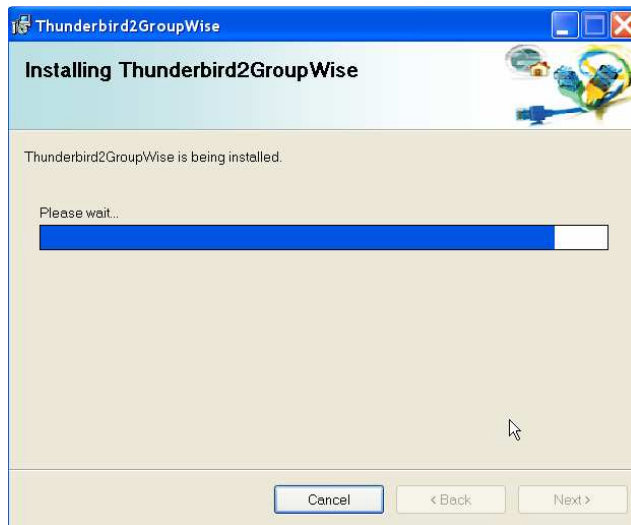
Click on the "Next" button to continue and specify the installation folder.



Confirming the setup settings starts the installation process.

Thunderbird2GroupWise

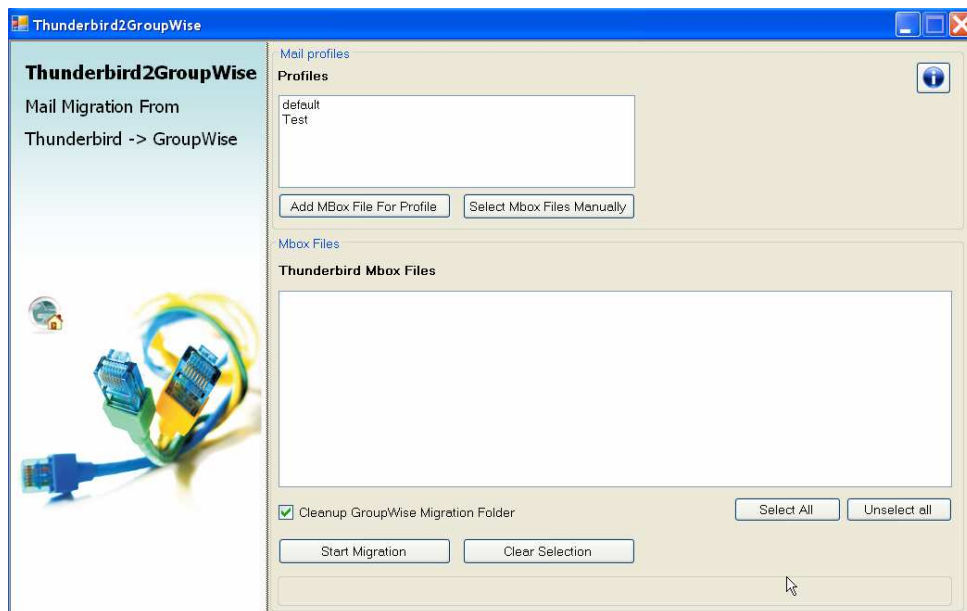
Data Migration Tool



After the successful installation Thunderbird2GroupWise is ready to use.

Usage

When you start Thunderbird2GroupWise the following screen appears:



During the start process the program checks whether the installed version of the GroupWise© client is sufficient and displays the Thunderbird mail profiles (only possible if Thunderbird is still installed on the workstation).

Thunderbird2GroupWise

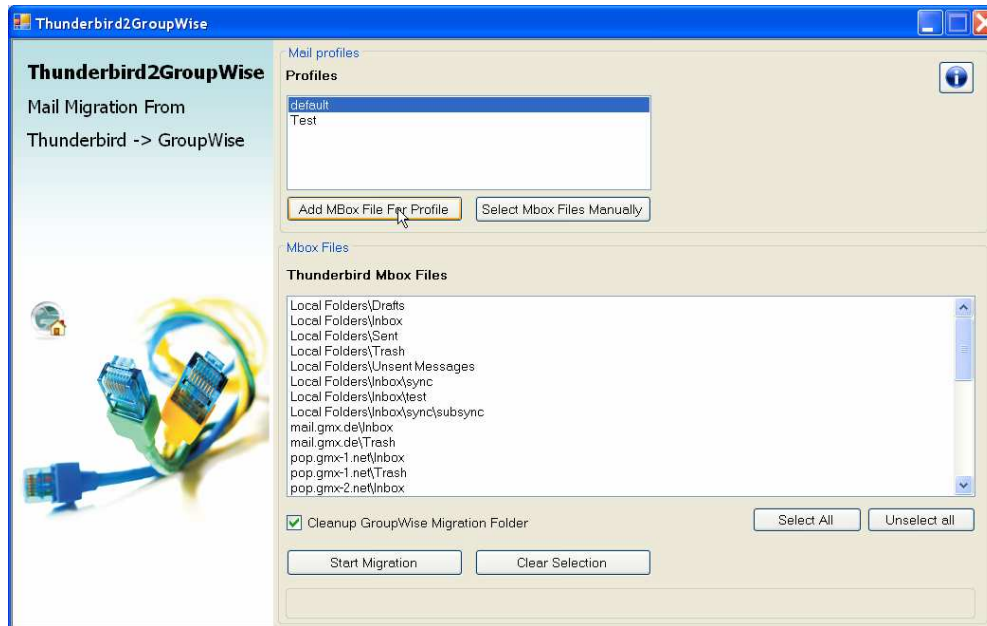
Data Migration Tool



The program can operate in an automatic or manual mode.

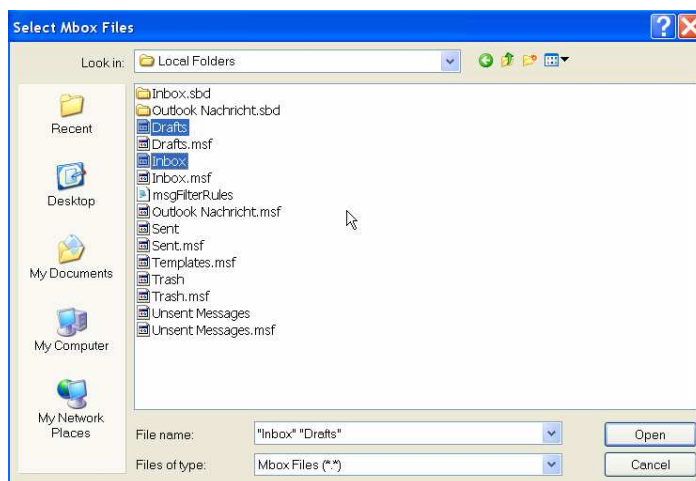
Automatic mode

After selecting the desired mail profile and clicking on the button "Adding Mbox Files For Profile" the program determines all Mbox files for the selected profile and displays them in the list box:



Manual mode

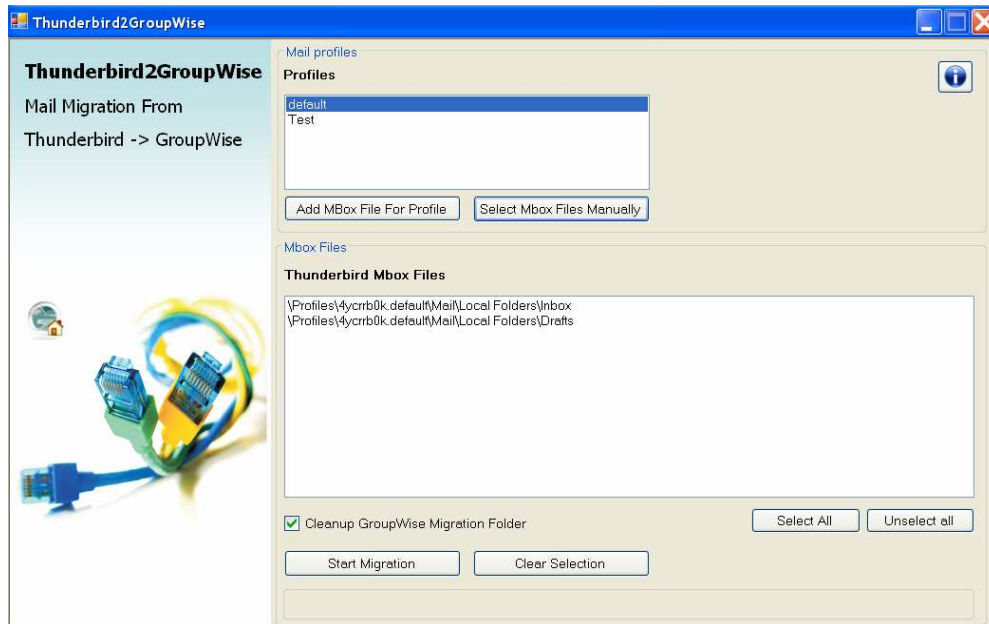
If Thunderbird isn't any longer installed or you want to select Mbox files which don't belong to one of the displayed mail profiles click the button "Select Mbox Files Manually". Within the following file chooser dialog multiple Mbox files can be selected.



By clicking the "Open" button the selected files will be displayed in the list box.

Thunderbird2GroupWise

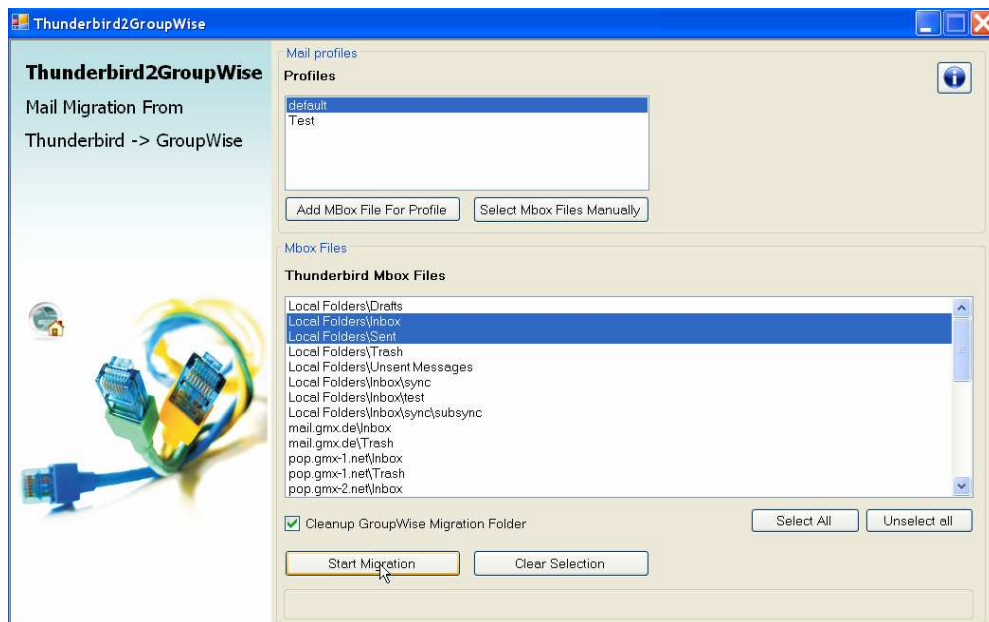
Data Migration Tool



Migration process

Before you start the migration process you can specify whether an existing Thunderbird2GroupWise migration process folder should be deleted in GroupWise or if the mails/folders should simply be added to it. This behavior can be adjusted by enabling/disabling the check box "Cleanup GroupWise Migration Folder".

The button "Start Migration" transfers all selected Mbox Files into GroupWise®.



Thunderbird2GroupWise Data Migration Tool



GroupWise© view after transferring the Inbox/Sent folder:

The screenshot shows the Novell GroupWise Remote application window. The main pane displays a list of emails in the 'Inbox' folder. The selected email is from 'GMX Spamschutz' with the subject '23 neue Mails in Ihrem Spamverdacht-Ordner'. The email content shows a status report from 07.06.2009 15:18:03 to 24.06.2009 08:20:04, indicating 69 mails in the spam folder and 23 new mails.

Logging

The whole migration process will be logged by default in the file "tb2groupwise.log", which is located in the program directory. Any warnings and error are reported in this file:

```
1 2009-08-18 10:22:37,546 INFO - Thunderbird2GroupWise - 0.9.5.0 started
2 2009-08-18 10:22:37,562 DEBUG - Temp path: C:\Documents and Settings\igk.KIGNB\Local
  Settings\Temp\Thunderbird2GroupWise
3 2009-08-18 10:22:37,687 DEBUG - Groupwise dll: C:\Program Files\Novell\GroupWise\gwcml.dll
4 2009-08-18 10:22:37,687 INFO - Groupwise version: 8.0.1.88093
5 2009-08-18 10:22:37,781 INFO - Groupwise account: $$$@utopia.novell.com:1239202019
6 2009-08-18 10:22:37,781 INFO - Mail profile: default
7 2009-08-18 10:22:37,781 INFO - Mail profile: Test
8 2009-08-18 10:23:20,109 INFO - Read mbox files for profile
9 2009-08-18 10:23:20,109 WARN - No profile selected. Please select the profile you want to
  migrate
10 2009-08-18 10:23:22,484 INFO - Read mbox files for profile
11 2009-08-18 10:23:22,500 INFO - Find Mbox files
12 2009-08-18 10:23:31,343 INFO - Read mbox files for profile
13 2009-08-18 10:23:31,343 INFO - Find Mbox files
14 2009-08-18 10:26:20,171 INFO - Read mbox files for profile
15 2009-08-18 10:26:20,171 INFO - Find Mbox files
16 2009-08-18 10:26:23,140 INFO - Read mbox files for profile
17 2009-08-18 10:26:23,140 INFO - Find Mbox files
18 2009-08-18 10:27:31,328 INFO - Migration started
19 2009-08-18 10:27:31,375 INFO - Create migration structure
20 2009-08-18 10:27:31,406 INFO - Migrate mbox file: Local Folders\Inbox
21 2009-08-18 10:27:31,406 INFO - Delete temporary files
```

Thunderbird2GroupWise Data Migration Tool



The log settings can be adjusted in the file log4net.properties:

```
1 <?xml version="1.0" encoding="utf-8" ?>
2
3 <configuration>
4   <<configSections>
5     <section name="log4net" type="log4net.Config.Log4NetConfigurationSectionHandler, log4net"/>
6   </configSections>
7
8   <log4net>
9     <appender name="FileAppender" type="log4net.Appender.FileAppender">
10      <file value="tb2groupwise.log" />
11      <layout type="log4net.Layout.PatternLayout">
12        <conversionPattern value="%date %level - %message%newline" />
13      </layout>
14    </appender>
15
16    <root>
17      <level value="ALL" />
18      <appender-ref ref="FileAppender" />
19    </root>
20
21  </log4net>
22
23 </configuration>
24
```

Configuration examples can be found here:

<http://logging.apache.org/log4net/release/config-examples.html>

Miscellaneous

Thanks to:

Tommy Mikkelsen (Denmark) - <http://www.itg.dk/> and <http://www.open-horizons.net/>
Erno de Korte (Netherlands) - <http://www.open-horizons.net/>
Mohamed Elgaby (Germany)

for their valuable help.

Please send your comments/feedback/requests to:

kig@klausigel.de